

WMD PM - DB25 Connection Guide

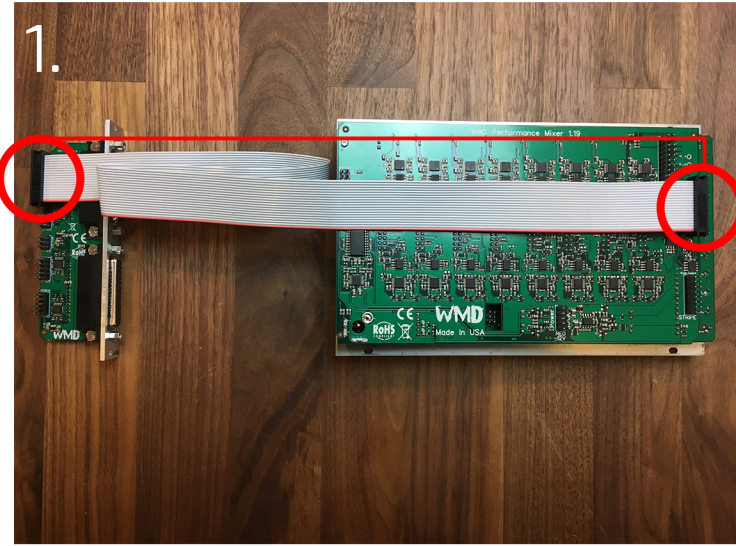
This is a quick instruction guide with photos on how to connect your brand new DB25 Expander to your WMD Performance Mixer System.



WMDEVICES.COM

For use without PM-Channels

1.



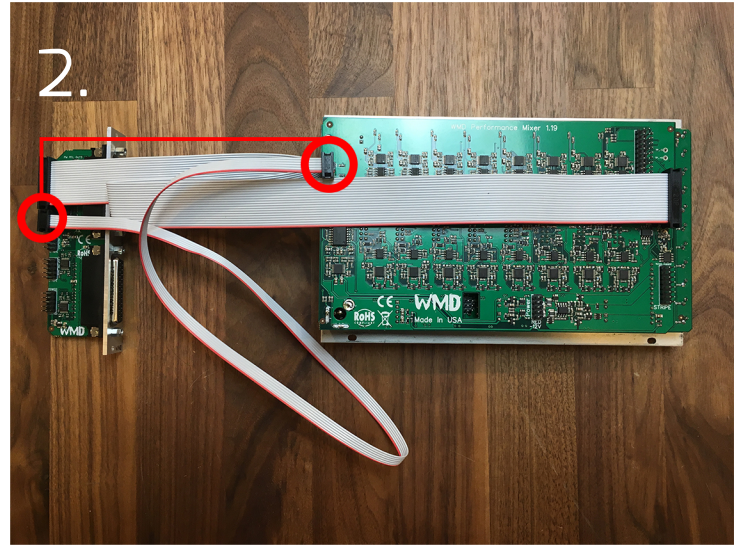
First, connect the far-right 20 pin connector on the Performance Mixer to the 20 pin header on the very top of the DB25 expander with the included 20 pin ribbon cable.

Red Stripe towards the bottom of both modules.

IMPORTANT NOTICE:

Every PM Module needs power. Make sure to plug your included 16-to-10 pin power cable from the header labeled POWER on the module to your power supply. -12V to the Red Stripe.

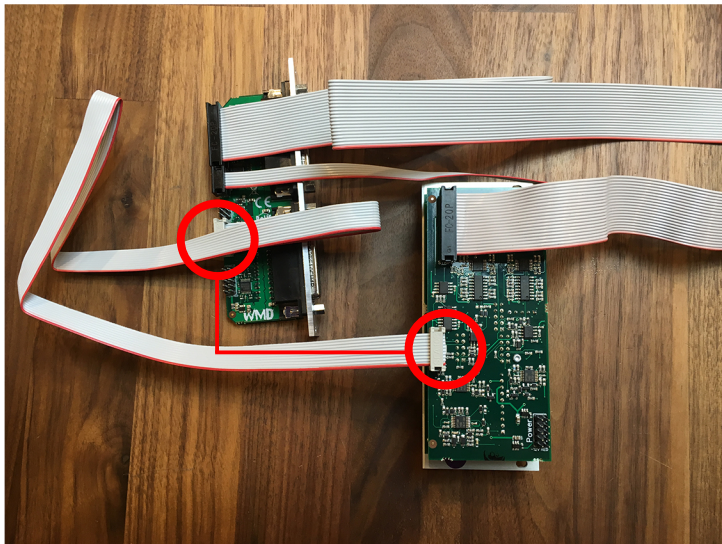
2.



Next, connect the top-most, far-left 6 pin header on the Performance Mixer to the 6 pin header on the DB25 expander directly below with the included 6 pin ribbon cable.

Red Stripe toward the bottom of both modules.

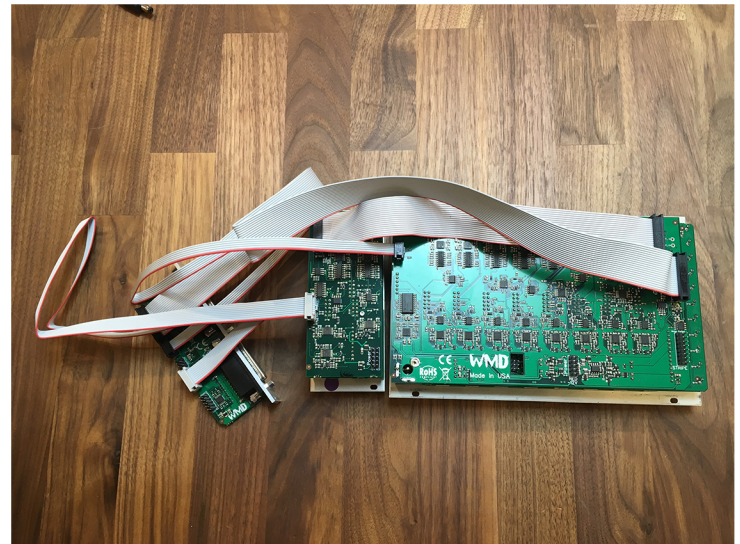
For use with PM-Channels



To connect Performance Mixer and PM-Channels, repeat the two steps above, connecting the Performance Mixer to the DB25 expander.

Next, connect the included 10 pin cable from the left-most, middle header on the PM-Channels to the header on the DB25 that is second from the bottom. Both are labeled accordingly.

Red Stripe toward the bottom of both modules.



This is what it will look like when all three modules are connected together (excluding power, of course).

* The cables are super long so you can put the DB-25 expander anywhere in your system that is convenient.

WMD PM - DB25 SNAKE CHEAT SHEET

Use this as a reference for what channel on the mixer will appear on your snake.

*All outputs are balanced and PRE FADER. We recommend using a DB25 to XLR or DB25 to TRS Snake to connect to your mixer, interface, or recorder directly.

Snake Channel	Performance Mixer Channel
DB25 TOP	
1	Master LEFT
2	Master RIGHT
3	Channel 1
4	Channel 2
5	Channel 3
6	Channel 4
7	Channel 5
8	Channel 6
DB25 BOTTOM	
1	Channel 7 LEFT
2	Channel 7 RIGHT
3	Channel 8 LEFT
4	Channel 8 RIGHT
5	Channel 9 LEFT
6	Channel 9 RIGHT
7	Channel 10 LEFT
8	Channel 10 RIGHT

